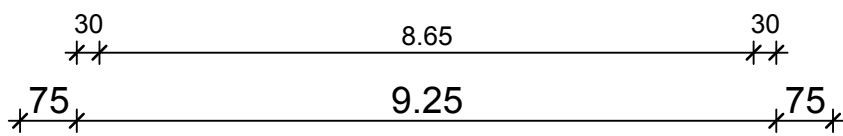
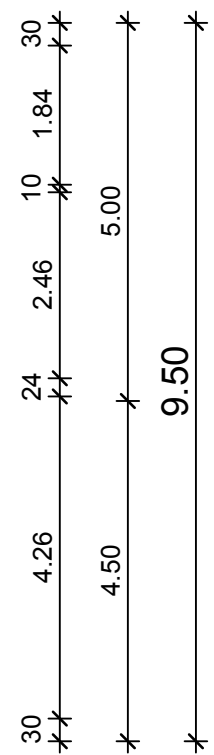
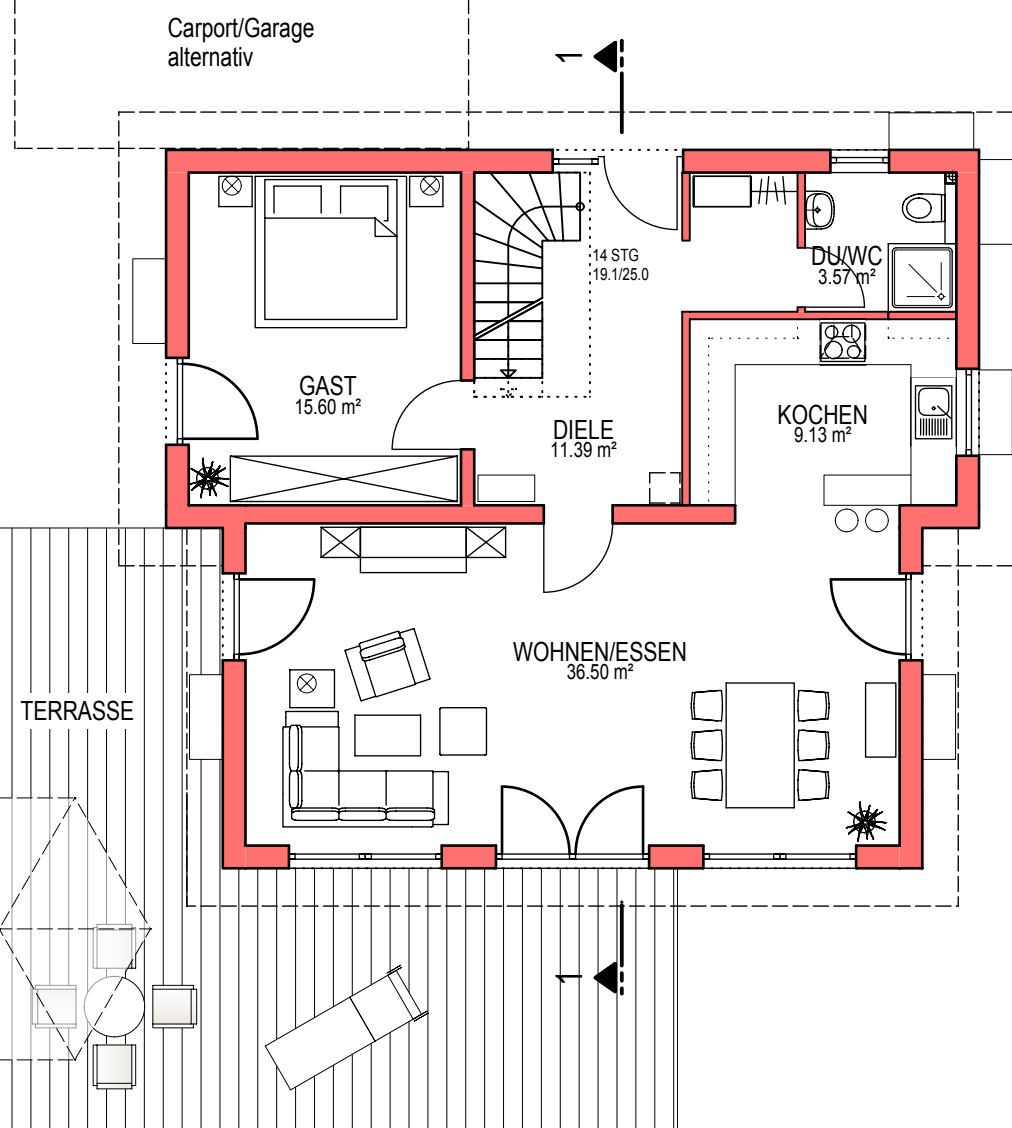
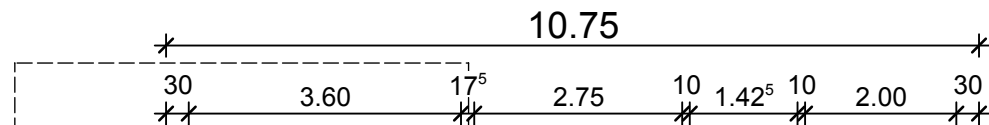
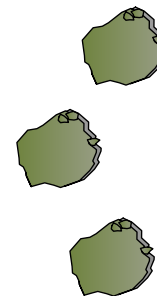
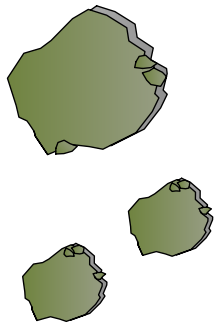
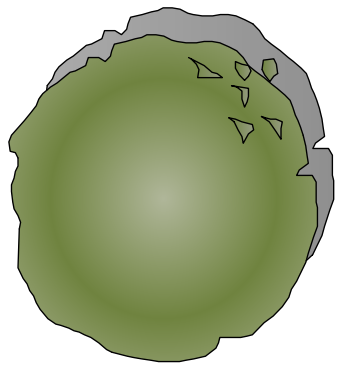


FLÄCHE MIT FERTIGMASSEN	
FLUR	11.89 m ²
HOBBYRAUM	38.45 m ²
KELLER	16.54 m ²
WASCHEN	15.87 m ²
SUMME:	82.75 m ²

HAUS 148 UNTERGESCHOSS M.1:100

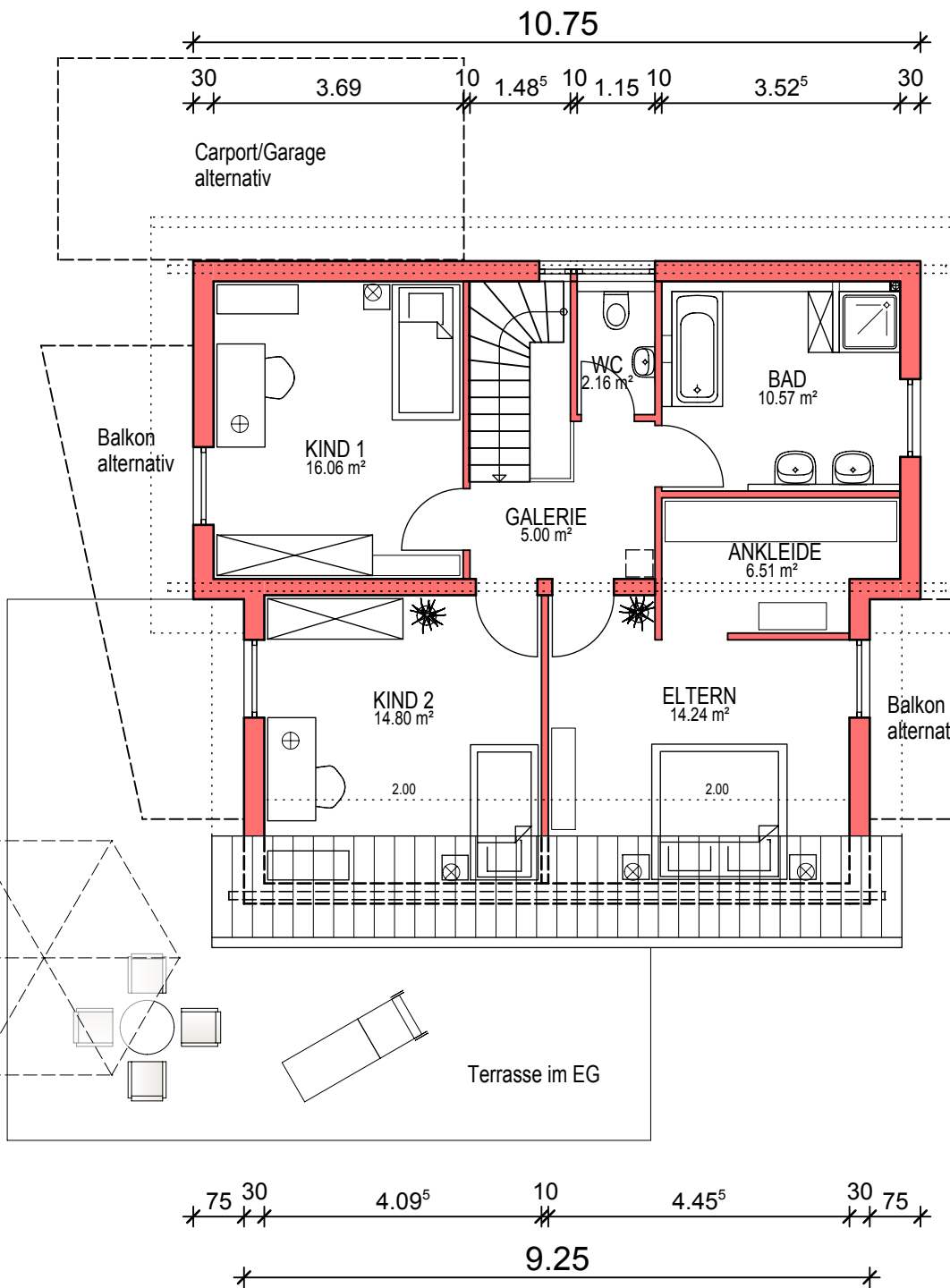
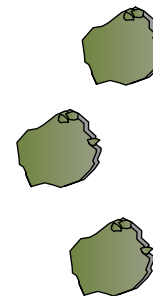
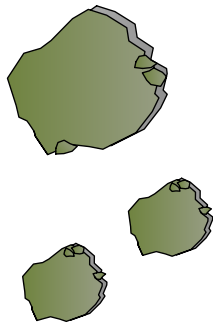
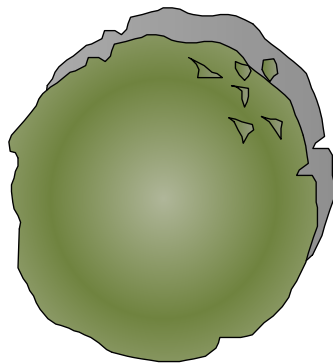
Haigerloch, den 21.10.2013

HAUG HAUSBAU GMBH & CO.KG
TANNWALDSTR.23
72401 HAIGERLOCH - HART
TEL. 07474 / 8419 - FAX 2979



WOHNFLÄCHE MIT FERTIGMASSEN	
DIELE	11.39 m ²
DU/WC	3.57 m ²
GAST	15.60 m ²
KOCHEN	9.13 m ²
WOHNEN/ESSEN	36.50 m ²
SUMME:	76.19 m ²

HAUS 148
ERDGESCHOSS M.1:100
 Haigerloch, den 21.10.2013
HAUG HAUSBAU GMBH & CO.KG
 TANNWALDSTR.23
 72401 HAIGERLOCH - HART
 TEL. 07474 / 8419 - FAX 2979



HAUS 148

DACHGESCHOSS M.1:100

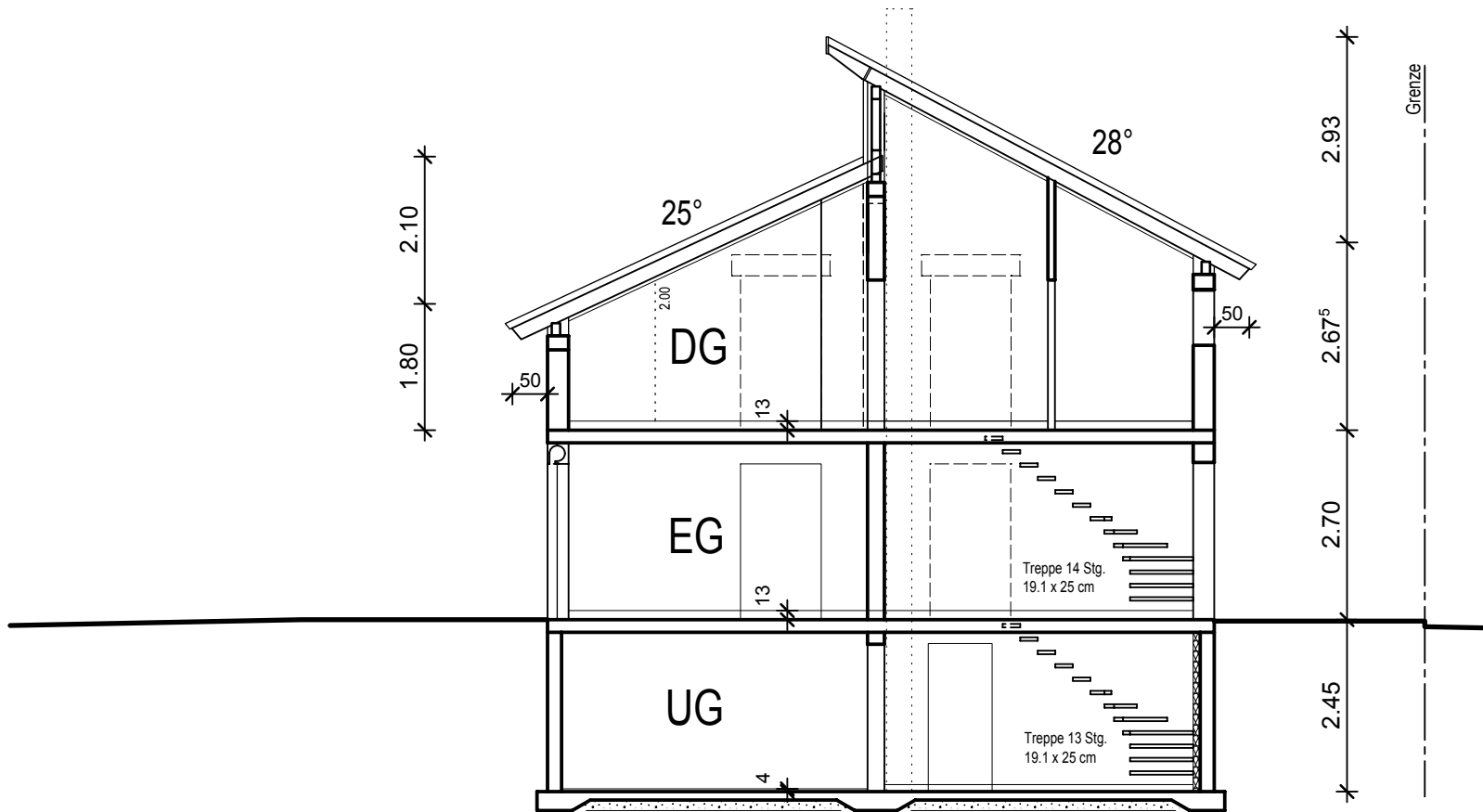
Haigerloch, den 21.10.2013

HAUG HAUSBAU GMBH & CO.KG

TANNWALDSTR.23

72401 HAIGERLOCH - HART

TEL. 07474 / 8419 - FAX 2979



HAUS 148
SCHNITT M.1:100
 Haigerloch, den 21.10.2013
HAUG HAUSBAU GMBH & CO.KG
 TANNWALDSTR.23
 72401 HAIGERLOCH - HART
 TEL. 07474 / 8419 - FAX 2979